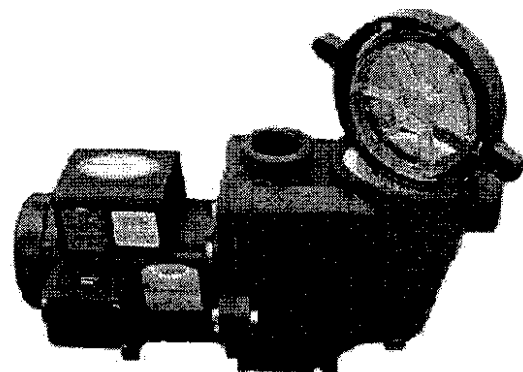


## Performance Pro Pumps

With Performance Pro we must bite the profit margin bullet disclose this marvelous pump, to your benefit of course! We were leaning toward taking on the Sequence line of pumps, the very week that we received a call from an engineer at Performance Pro. It turns out that Performance Pro had the renowned Baldor motor company manufacture a custom winding to more efficient specs that through capacitors allows a greater wattage drop under pump loading! Its like having a variable speed motor on your pond, without having to pay extra \$\$ for high water volumes. This impressive unit weighs in at 42 pounds and has an overall dimension of 22L x 12H x 9W. The pumps feature 2" suction and discharge porting and are **SELF PRIMING**, a first for any pump in this category. The pump housing itself will withstand 100psi static pressure. Especially noteworthy is the integrated design of the leaf trap with the pump housing, and the heavy duty quick cam lid which is the easiest to open I have ever seen in the industry, and the motor casing is a sealed unit with a rear mounted, shrouded external cooling fan so that water cannot splash up into the motor under the most abusive circumstances. The unit is built like a rock!. The Performance pro pump also carries a full 3 year warranty. You will more than recover the extra cost for this pump in energy efficiency at large water volumes alone, in the first year of operation. Plus, you get an additional year of warranty coverage over most all other pump manufacturers.



### 1/4 HP Performance Pro High Volume High Efficiency

2.9 amp (315 watts) maximum power consumption

Valve Controllable Flow Rate Range:

from 1200 GPH at 20 feet of head at 225 watts  
to 4800 GPH at 9.8 feet of head at 315 watts.

**Exceptional Function and Value at \$469.00**

Recommended for models .60 through 8.8

### 1/3 HP Performance Pro High Volume High Efficiency

4.1 amp (449 watts) maximum power consumption

Valve Controllable Flow Rate Range:

from 1200 GPH at 25 feet of head at 253 watts  
to 5400 GPH at 12 feet of head at 428 watts.

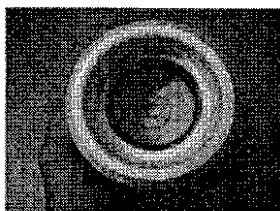
**Exceptional Function and Value at \$469.00**

Recommended for models 2.2 through 8.8

Note: Maximum flow rating may not be attainable with models .60 and 1.1 as these filters are not designed to operate at high flow rates.

## Swing Check Foot Valves

If you use a check valve on your intake line in your pond, it is imperative that you use a swing check valve and not a spring activated valve. (see photo below) A swing check valve allows full, unrestricted water flow through the center of the valve, as the valve will swing clear of the center of the fixture once the water begins to flow. A spring check valve has a spring, center guides, and a valve piece that is permanently affixed in the center of the water flow. This setup is not at all effective for pond use as algae, dirt and trash will get caught up on all of those mechanical parts and clog the water line.



<Swing Check Closed

1 1/2" \$16.00

2" \$19.00

Swing Check Open>

